

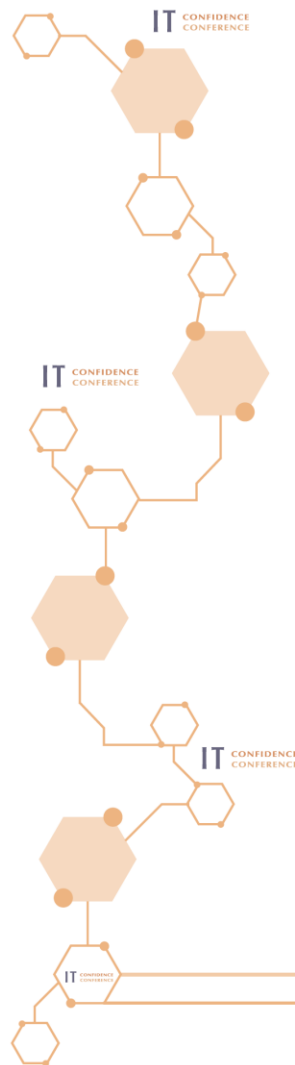
# 2018 China Software Industry Benchmark Data

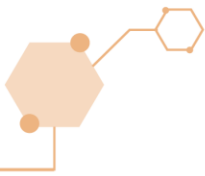
SPI China : Ying Liu



# Agdenda

- Data scope
- Data Credibility
- Data Processing Flow
- 2018 China Software Industry Benchmark
  - Productivity data
  - Defect Density data
  - Man month data
  - Workload disctibution ratio





# Data Scope

Data reliability is high with full project life cycle data

# 5971

@2018 China Software Industry benchmark data source from the 5971 <Industry Software Processing benchmark database>

# 4100

2012-2016

# 836

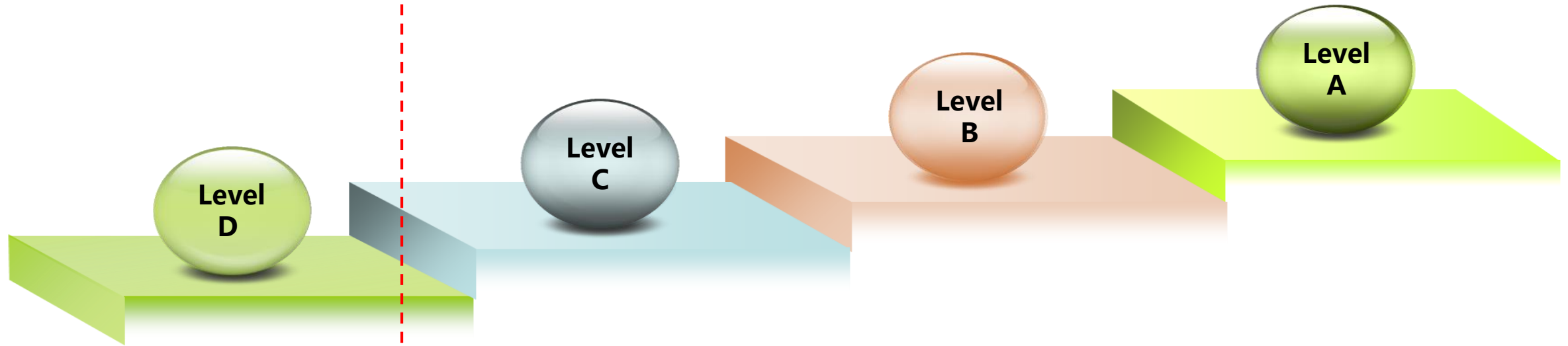
2017

# 1035

2018



# Data Credibility



## Level D

### Not Confident

Refers to information for which there is more doubt than confidence

## Level C

### Slightly Confident

Refers to information for which there is some element of doubt.

## Level B

### Confident

Refers to information upon with some degree of confidence can be replaced

## Level A

### Very Confident

Refers to information that can be depended upon with much confidence

# Data Processing Workflow



Data Author



Data Administrator



Audit Expert

Project Historical data

Data integrity check

Data Auditing

Organization No. and allocation of items

Anonymous treatment

Data storage

Update baseline database

FP counting and auditing

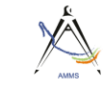
Processing data auditing

Data reliability evaluation

Normalizing treatment

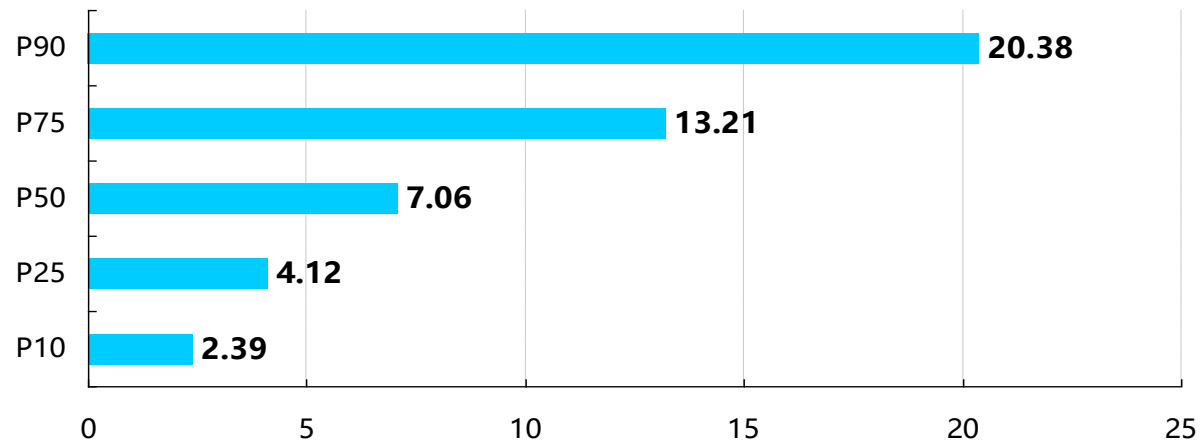
Baseline comparison report

Baseline report



# 2018 China Industry-wide Productivity data

Productivity (Unit: Man-hour/FP)				
P10	P25	P50	P75	P90
2.39	4.12	7.06	13.21	20.38



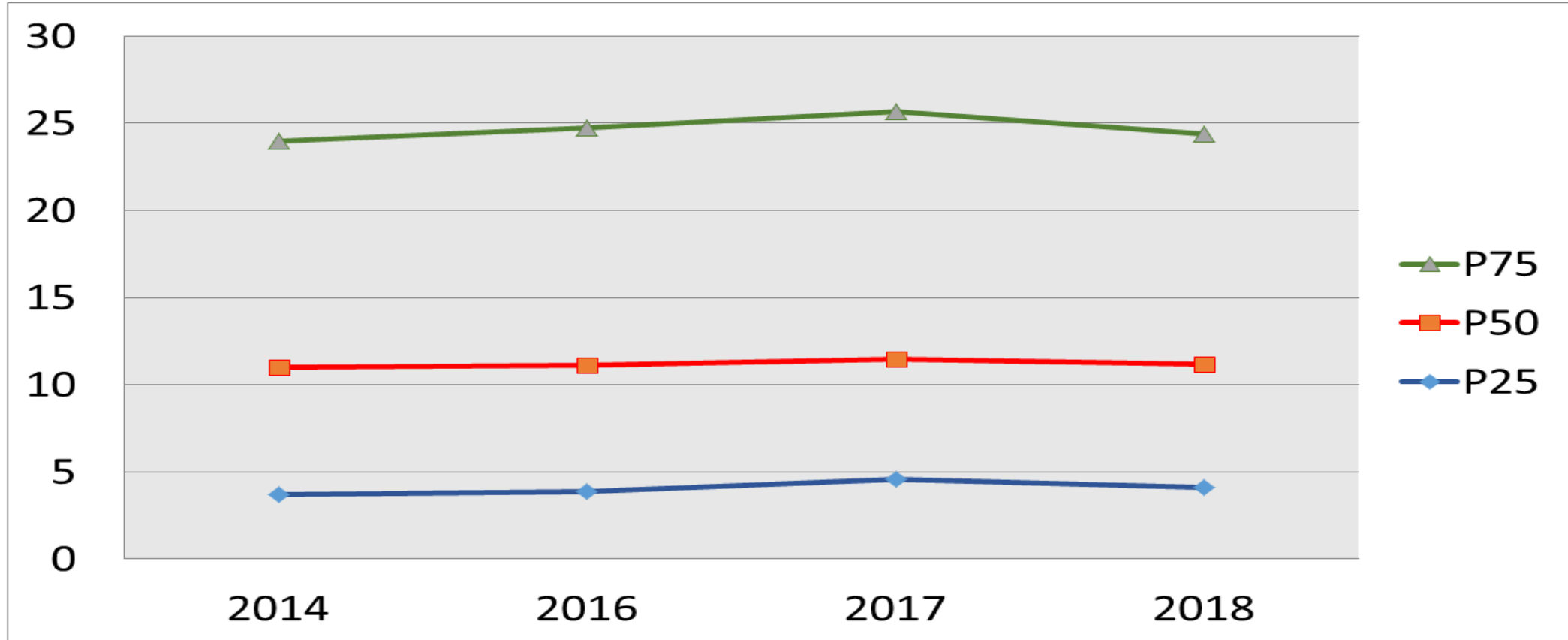


# 2018 Sub Industry Productivity data

Business Area	P10	P25	P50	P75	P90
Finance	4.15	6.90	12.70	19.35	27.75
Telecom	3.13	5.31	12.15	20.65	29.20
Government	1.69	3.25	6.58	12.31	15.16
Energy	2.07	4.02	7.32	15.49	28.98
Transport	2.31	3.96	7.22	20.11	30.23
Manufacture	1.98	3.66	9.25	18.26	25.49

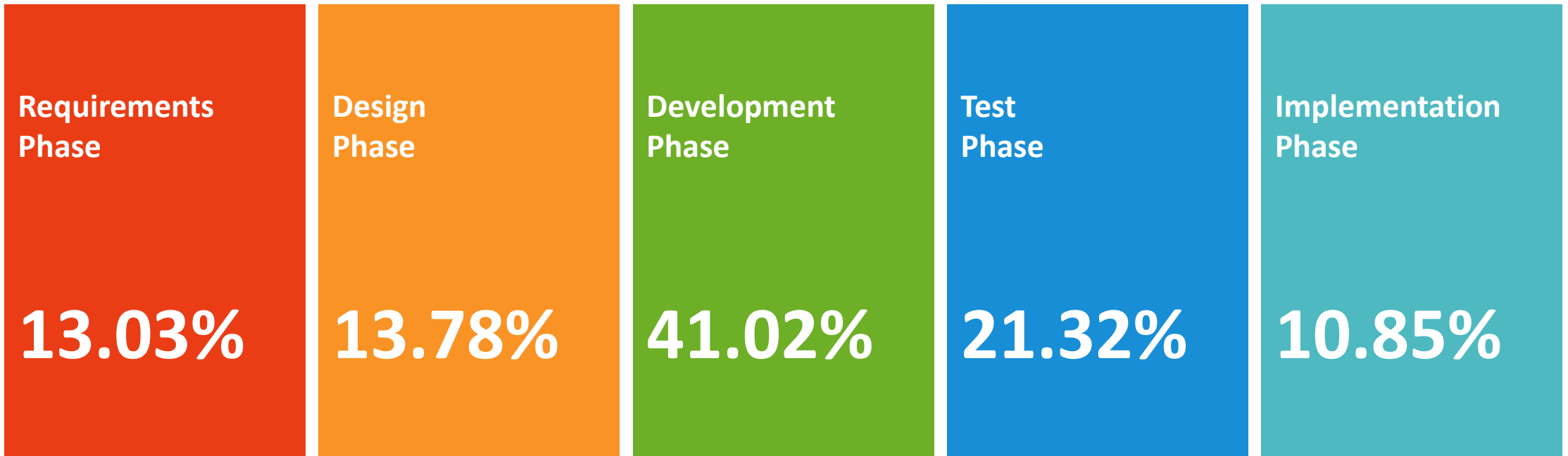


# 2014-2018 Productivity Benchmark Data Trends



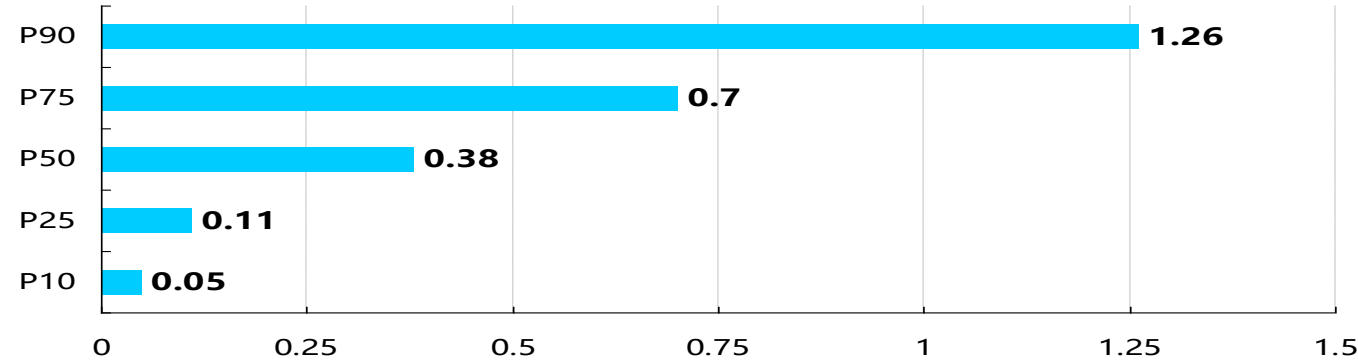


# Workload Distribution Ratio



# Defect Density

Defect Density (Unit: Defect/FP)				
P10	P25	P50	P75	P90
0.05	0.11	0.38	0.70	1.26





# Man-month Fee of China Top10 Cities



City	Man-month (10K RMB )	Man-month (USD \$)
Beijing	2.57	3756
Shanghai	2.51	3668
Shenzhen	2.42	3537
Guangzhou	2.35	3434
Dalian	2.68 (Offshore)	3916
Hangzhou	2.10	3069
Nanjing	2.06	3010
Xiamen	1.98	2893
Tianjin	1.95	2849
Wuhan	1.78	2601





Asociación Mexicana de Métricas de Software



## Colaboradores:

